

# Installation guide

## TSE80-B Color Touchscreen

### **WARNING**



**Risk of Fire, Electrical Shock, Cuts or other Casualty Hazards-** Installation and maintenance of this product must be performed by a qualified electrician. This product must be installed in accordance with the applicable installation code by a person familiar with the construction and operation of the product and hazards involved. For continued protection against shock hazard replace all covers and guards after field wiring is completed.



Before installing or performing any service, the power **MUST** be turned **OFF** at the branch circuit breaker. According to NEC 240-83(d), if the branch is used as the main switch for a fluorescent lighting circuit,



the circuit breaker should be marked with "SWD". All installations should be in compliance with the National Electric Code and all state and local codes.



**Risk of Personal Injury-** Due to sharp edges, handle with care. Always use at least two people when lifting and mounting heavy or large units

Failure to comply with these instructions may result in serious injury (including death) and property damage.

**DISCLAIMER OF LIABILITY:** Cooper Lighting Solutions assumes no liability for damages or losses of any kind that may arise from the improper, careless, or negligent installation, handling or use of this product.

**IMPORTANT:** Read carefully before installing product. Retain for future reference.

**NOTICE:** Product may become damaged and/or unstable if not installed properly.

**Note:** Specifications and dimensions subject to change without notice.

**ATTENTION Receiving Department:** Note actual product description of any shortage or noticeable damage on delivery receipt. File claim for common carrier (LTL) directly with carrier. Claims for concealed damage must be filed within 15 days of delivery. All damaged material, complete with original packing must be retained.

**NOTICE:** If a room is wired for two circuits using two separate hot leads, it is very important to connect only one circuit per relay. Both circuits must be fed from the same phase.

**NOTICE:** Ensure that all modules are firmly seated on the DIN rails before beginning field wiring.

**NOTICE:** The high voltage supply should be fed to the cabinet via an external isolation breaker with sufficient capacity for the planned installation.

**NOTICE:** Ensure that the supply is fully isolated at an external breaker before opening doors. Test that power has been removed before starting to handle conductors.

**NOTICE:** Ensure that high voltage and low voltage wiring remains separate.

**NOTICE:** All new wiring must be fully verified before applying power.

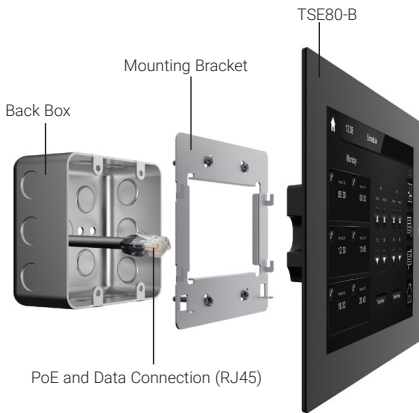
**NOTICE:** Designed for indoor installation and use only. Dry location rated.

## Planning the Installation

TSE80-B is designed to be wall mounted in landscape orientation.

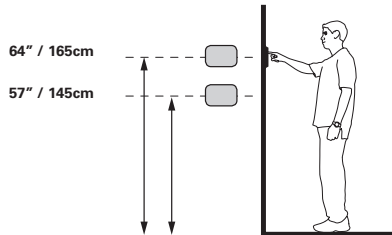
TSE80-B requires a minimum mounting depth of 1in (2.45cm) from the front wall surface plus room for cable/s. Power is supplied by Power Over Ethernet (PoE). PoE must meet the IEEE 802.3af standard. TSE80-B connects to the local network via a hard wired Ethernet connection.

## Overview



## Mounting height

The recommend mounting height for the TSE80-B is 57 - 64in (145-165cm) above the finished floor to the center of the unit.



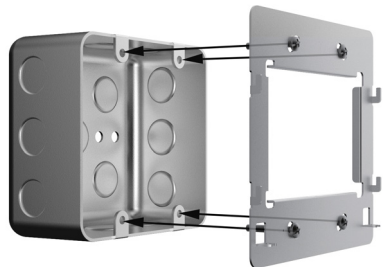
## Installation

TSE80-B has been designed to mount to a US NEMA 2 gang back box (Ref: TSE80 NEMA Back Box).

## Installing the mounting frame

TSE80-B includes a mounting frame that **MUST** be used for this installation.

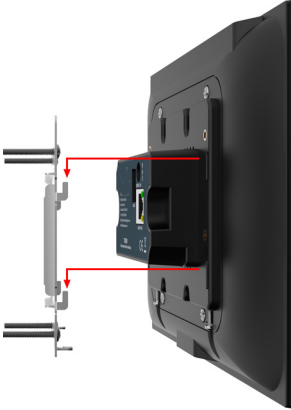
Using the included screws mount the mounting bracket onto the back box and verify that the components are level before tightening the captive screws on the TSE80-B.



## Mounting the TSE80-B

Align the mounting frame hooks with the TSE80-B mounting slots and gently pull the TSE80-B unit down the mounting bracket.

Make sure the mounting hooks are properly engaged.



Tighten the 2 captive screws to secure the TSE80-B to the mounting bracket



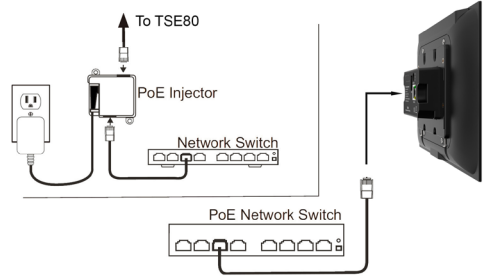
## Power connection

TSE80-B is designed to be powered over the Ethernet connection (PoE).

## PoE Connection

PoE connection requires that IEEE 802.3af standard. Utilize a network switch or PoE injector that meets this standard.

Connect the TSE80-B using a standard CAT5E or CAT6 Ethernet cable from the network switch to the LAN/PoE jack on the back of the TSE80-B.



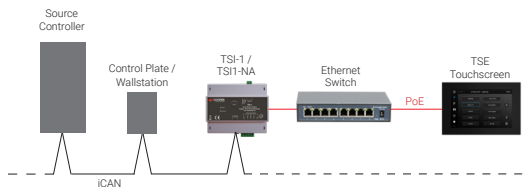
## Connecting Ethernet

When not utilizing a PoE switch, it is recommended that you connect the TSE80-B to a network switch via a PoE injector.

Utilizing a standard CAT5E or CAT6 network Ethernet cable connect to the LAN/PoE jack.

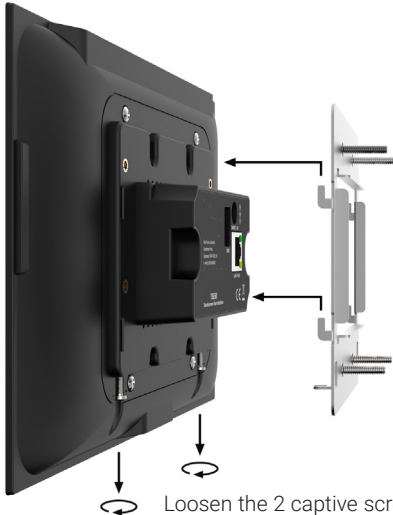
## Connecting to the lighting network

TSE80-B connects to the lighting network using a touchscreen interface (TSI-1 or TSI-1NA). Ensure that both the touchscreen and touchscreen interface are on the same physical Ethernet Network and within the same IP address range. See the TSE User Guide for information on setting IP addresses.



## Removing the TSE80

Loosen the 2 captive screws on the underside of the TSE80. Lift the unit upwards off the mounting frame hooks and then pull the unit away from the mounting frame to disengage.



Loosen the 2 captive screws before lifting off the unit

## Specifications

Dimensions: 223.5mm w (8.8") x 148.3mm h (5.84")

Mounting depth: 22mm (0.86")

Display: 8" (203.2mm Diagonal))

Resolution: 1280 x 800

Network: 10/100/1000 Ethernet

Connections: LAN/PoE RJ45

Power Requirements:

Via PoE: IEEE 802.3af, 13W maximum draw (@48 V 270 mA max)

or

Via PSU: 24V DC @ 1A



All products manufactured by Cooper Lighting Solutions are warranted to be free from defects in material and workmanship and shall conform to and perform in accordance with Seller's written specifications. For detailed warranty information, contact Cooper Lighting Solutions.

This warranty will be limited to the repair or replacement, at Seller's discretion, of any such goods found to be defective, upon their authorized return to Seller. This limited warranty does not apply if the goods have been damaged by accident, abuse, misuse, modification or misapplication, by damage during shipment or by improper service.

There are no warranties, which extend beyond the hereinabove-limited warranty, INCLUDING, BUT NOT LIMITED TO, THE IMPLIED WARRANTY OF MERCHANTABILITY AND THE IMPLIED WARRANTY OF FITNESS.

No employee, agent, dealer, or other person is authorised to give any warranties on behalf of the Seller or to assume for the Seller any other liability in connection with any of its goods except in writing and signed by the Seller. The Seller makes no representation that the goods comply with any present or future federal, state or local regulation or ordinance. Compliance is the Buyer's responsibility.

The use of the Seller's goods should be in accordance with the provision of the National Electrical Code, UL and/or other industry or military standards that are pertinent to the particular end use. Installation or use not in accordance with these codes and standards could be hazardous.



### Cooper Lighting Solutions

Usk House, Lakeside, Llantarnam Park,  
Cwmbran, NP44 3HD, UK

t: +44 (0)1923 495495 e: [info@cooperlighting.co.uk](mailto:info@cooperlighting.co.uk)  
[www.cooperlighting.co.uk](http://www.cooperlighting.co.uk)

Document: TSE55-B 9850-000765-00