



DALI Lighting Network Solutions

For comfortable, intelligent, efficient buildings

DALI Product Range

DINrail Mount DALI Controllers

SCMD4



4 Loop Addressable DALI Controller

4 Loop DALI controller enabling control of up to 256 individual DALI addresses.

- 64 groups per DALI loop
- DMX control
- RS485 control
- Alarm input
- Dimensions: 159 x 90 x 58mm (L x W x H)
- Weight: 0.35Kg

SCMD2



2 Loop Addressable DALI Controller

2 Loop DALI controller enabling control of up to 128 individual DALI addresses.

- 64 groups per DALI loop
- Dimensions: 159 x 90 x 58mm (L x W x H)
- Weight: 0.35Kg

SCMH1200



12 Channel Digital Dimming Controller

12 channel digital dimming controller. Each channel may be configured to provide a Broadcast DALI, 1-10V, 0-10V or DSI output.

- iCANnet and DALI loop compatible
- 12 x 1-10V, 0-10V, DSI or Broadcast DALI outputs
- Dimensions: 212 x 90 x 58mm (L x W x H)
- Weight: 0.35Kg

SCMR1232



12 Channel 32 Amp Feed Through Relay Controller

12 channel feed through relay unit rated for up to 32 amps per channel, designed to sit on load lines to switch heavy loads of all types.

- iCANnet and DALI loop compatible
- Any phase on any input
- Switches resistive, inductive and capacitive lighting loads
- DMX control
- RS485 control
- Alarm input
- Dimensions: 212 x 90 x 58mm (L x W x H)
- Weight: 0.8Kg

User Interface

CLD



DALI Control Panel

Available in several button configurations which include the use of a large and small buttons. There is also a on/off button option with associated up/down adjustments. With an optional engraving service the DALI control panel is fully flexible to meet the needs of your project.

- Integrated DALI communication interface
- Draws power from the DALI communications bus to simplify wiring
- DALI power consumption: 3.75mA
- Suitable for standard single gang UK wall box
- Available in Black or White finishes
- Standard or custom engraving on buttons
- Dimensions: 86 x 86 x 35mm (L x W x H)

DALI-I-U



DALI Input Unit

Enables customer specified switches, sensors, time clocks or other on/off control devices to be incorporated into a standard DALI installation.

- Powered from DALI bus, compatible with standard DALI rating
- Up to four user configurable inputs
- Default functions – ready to use out-of-box
- DALI power consumption < 9 mA
- Dimensions: 27 x 20 x 4mm (L x W x H)

DINrail Mount Ethernet Gateway

iCANnet Network - Ethernet Gateway

The Ethernet Gateway provides a connection between an iLight network and an Ethernet LAN. This allows a user to control and configure the iLight system using tablets or PC.

- Configurable IP address
- Facilitates internet and Wi-Fi LAN connection into iCANnet™
- Astronomical time clock (Requires a permanent internet connection for Network time protocol)
- Holiday mode (Replay learned usage when absent. Requires time clock to be activated and a permanent internet connection)
- Supports iLight applications via mobile devices.
- Dimensions: 159 x 90 x 58mm (L x W x H)
- Weight: 1Kg



EG2

Enterprise Software Suite

Enterprise Suite is the front-end PC application for monitoring and controlling iLight systems. Features include:



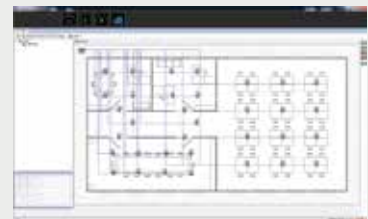
Usage Logging (Energy Dials)

The usage logging functions allow monitoring of the power usage of the lighting system. The overall usage of the entire system can be viewed, as well as details of sub-sections of the facility.



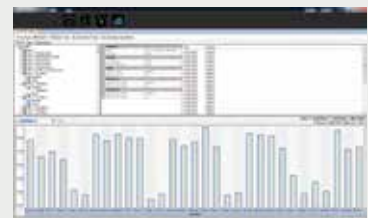
Floor Plan monitoring / control

This view allows navigation and monitoring of the facility via a birds eye floor plan view. Local scene control can also be achieved by a virtual control panel.



Advanced Graphs

The Advanced Graphs page allows more detailed and advanced searches into historical usage information than is available on the 'Usage Logging' page.



Scheduler

The scheduler page allows the viewing and editing of timed events on the network.



PC Operate

iLight PC Operate is a fully configurable and customisable graphical user interface for any iLight lighting control system.

Operated using any size PC touchscreen or integrated tablet, PC Operate is an ideal way to simplify the operation of lighting in any installation.

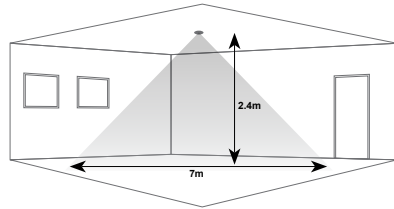
The PC Control Solution allows iLight graphic control using any size screen - Ideal for applications where control is effected through simple visual interfaces.



DALI Sensors

DALI Ceiling Sensor with PIR, Daylight and Temperature Measurement

DALI Multi-Sensor combines daylight sensing, occupancy detection and temperature measurement into a single device.



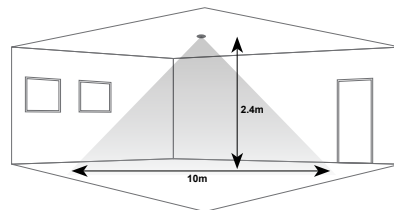
- Low profile design
- Coverage: 55m² at 2.4m ceiling height
- Draws power from the DALI communication bus to eliminate the need for external power packs
- DALI power consumption: 3.75mA
- Dimensions: 91mm Ø x 36mm Depth



FLT-MTS6-DALI

DALI Ceiling Sensor with PIR, Daylight and Temperature Measurement

DALI Multi-Sensor combines daylight sensing, occupancy detection and temperature measurement into a single device.



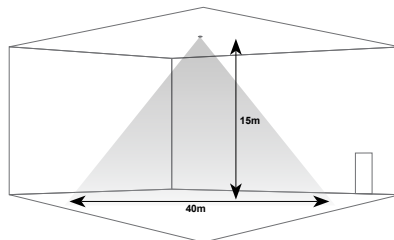
- Low profile design
- Coverage: 110m² at 2.4m ceiling height
- Draws power from the DALI communication bus to eliminate the need for external power packs
- DALI power consumption: 3.75mA
- Dimensions: 91mm Ø x 36mm Depth



FLT-MTS12-DALI

DALI Ceiling Sensor, High Bay PIR Presence/Absence Detector

High sensitivity PIR detector suitable for high bay applications, such as warehouses and factories, and where high detection sensitivity is needed.



- High sensitivity detection
- Coverage: 40m Ø at 15m ceiling height
- Draws power from the DALI communication bus to eliminate the need for external power packs
- DALI power consumption: 8mA
- Dimensions: 88mm Ø x 112mm Depth



PPAD-C-HB-DALI-ADDR

DALI Digital to Analogue Converter

Built-in relay and 0-10V current sinking interface used to integrate individual or a group of dimmable 0-10V ballasts/drivers to iLight's DALI lighting control system.

- Ultra low profile form factor designed to fit inside most ballast compartments
- Powered by the DALI bus
- Automatic detection of the DALI Bus power loss with default to closed, i.e. on or 100% position
- DALI power consumption: 3.75mA
- Dimensions: 100 x 28.6 x 25.4mm (L x W x H)



FLT-DAC-DALI

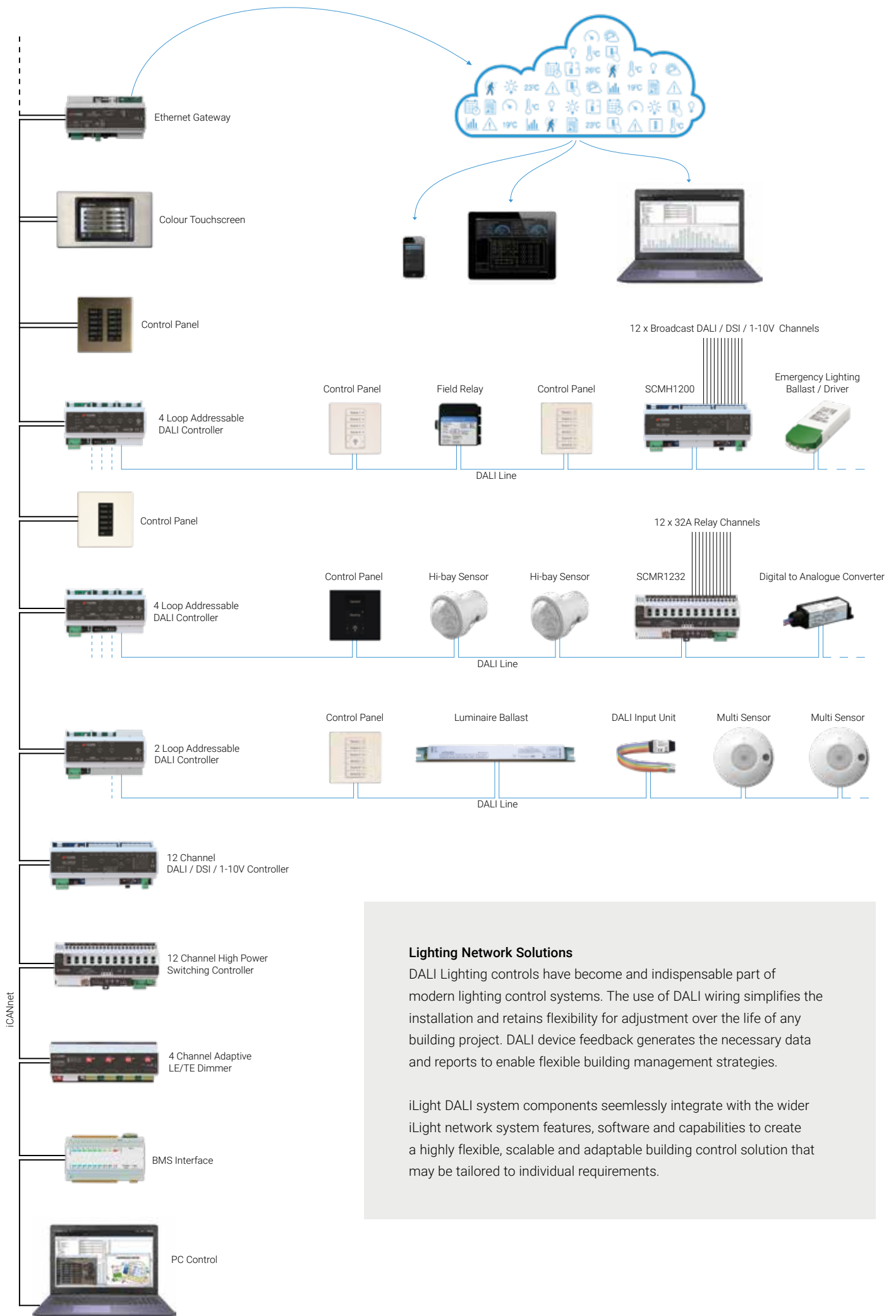
DALI Field Relay

The iLight Field Relay provides On/Off control and network connectivity. It uses advanced switching technology specifically designed to handle the large inrush currents and inductive loads found in lighting applications.

- Maximum Load: 20 Amps
- Automatic loss of power detection defaults relay to closed (On) position
- DALI power consumption: 3.75mA
- Dimensions: 88 x 80 x 39mm (L x W x H)



FLT-HPRS-DALI



Lighting Network Solutions

DALI Lighting controls have become an indispensable part of modern lighting control systems. The use of DALI wiring simplifies the installation and retains flexibility for adjustment over the life of any building project. DALI device feedback generates the necessary data and reports to enable flexible building management strategies.

iLight DALI system components seamlessly integrate with the wider iLight network system features, software and capabilities to create a highly flexible, scalable and adaptable building control solution that may be tailored to individual requirements.

Contact Us

+44 (0)1923 495495

enquiries@iLight.co.uk

www.iLight.co.uk

Cooper Lighting Solutions
20 Greenhill Crescent,
Watford Business Park,
Watford, Herts, WD18 8JA. UK

© 2020 Cooper Lighting Solutions
All Rights Reserved

DALI SOLUTIONS A4 Rev 5 0520

Changes to the products, to the information contained in this document, and to prices are reserved; so are errors and omissions.

iLight is a registered trademark.

All other trademarks are property of their respective owners.

