

## EG2-NA Ethernet Gateway



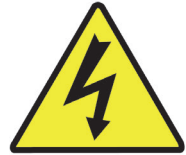
# Contents

Safety	2
Introduction	3
Dimensions	3
Specification	3
Weight	3
Product Overview	4
Mounting	4
Control Wiring	5
Supply Wiring	5
Setup Instructions	6



## WARNING HAZARDOUS VOLTAGES DISCONNECT FROM SUPPLY BEFORE REMOVING COVERS

NO USER SERVICEABLE PARTS INSIDE  
SERVICE BY QUALIFIED PERSONNEL ONLY



### Please Read This First

The EG2-NA is built and tested to strict safety regulations. By following the steps listed below and elsewhere within this guide, you can ensure safe installation and operation of these controller units.

- The EG2-NA must be installed only by a qualified electrician.
- The installation must comply with the appropriate electrical codes and regulations in force in your area.
- The EG2-NA is designed for indoor installation and use only.
- Ensure that all wiring used conforms fully to local specifications and is sufficiently rated for the installation.
- All new wiring must be fully verified before applying power.
- The high voltage supply should be fed to the EG2-NA via an external isolation breaker with sufficient capacity for the planned installation.
- Ensure that the supply is fully isolated at an external breaker before removing the chassis covers. Test that power has been removed before starting to handle conductors.
- Ensure that high voltage and low voltage wiring remains separate.

## Introduction

The Ethernet Gateway provides a connection between an iCAN network and an Ethernet LAN. This allows a user to control and configure the iCAN system using iCANsoft on a LAN network PC or via the internet rather than by connecting directly into iCANnet™. Where a wireless LAN is in place (or by connecting a wireless router into the EG2-NA) the user can access the network with a Wi-Fi enabled PC running iCANsoft. The Ethernet Gateway is also the host for the iCAN series of remote applications including iOS (iPhone®/ iPod touch®/ iPad®) and a webserver front end where applications are downloaded separately. Coupling the EG2-NA to a WIFI network enables scene control, visual feedback and modification from your hand held device.

The Ethernet Gateway also facilitates connection to the internet when used with iCANsoft, a firewall, ISP and a Ethernet switch, this then enables remote connection for programming & obtaining diagnostics of the lighting control system.

The built in astronomical timeclock feature enables preprogrammed timed events for your lighting system.

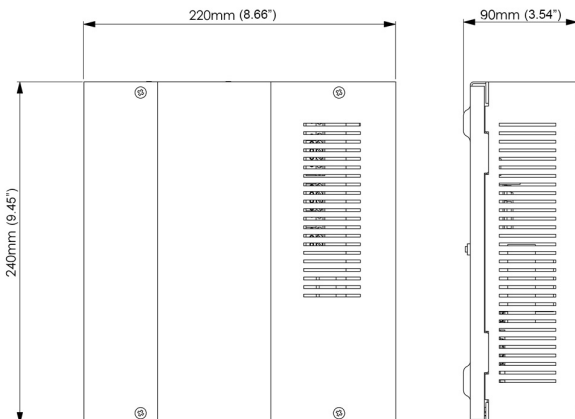
## Specification

Unit requires: 120-240 VAC 50/60 Hz 0.45A 1Ø Maximum  
iCAN network connection  
Ethernet connection: Fully transformer isolated  
Ambient temperature range: 0°C to 40°C (32°F to 104°F)  
Humidity: 20% to 90% non-condensing  
Configuration and sequence memory  
Field upgradable FLASH program memory  
Internal +15 VDC, 2A power supply

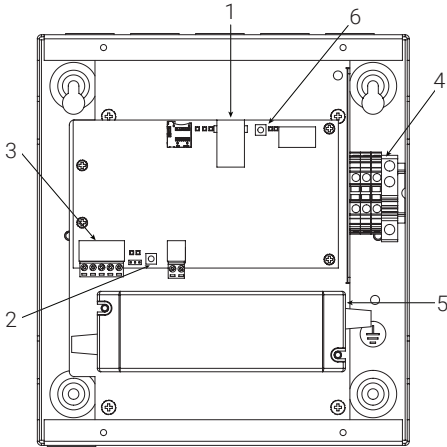
## Weight

- Packed: 2.6 kg (5.7 lbs)
- Unpacked: 2.4 kg (5.3 lbs)

## Dimensions



## Product Overview



1. Ethernet Connection
2. CAN ID Button
3. iCAN Network Connector with a green (power) and yellow (network activity) LED
4. Main Supply Terminal Block
5. Power Supply
6. Reset Button

## Mounting

### Location and spacing

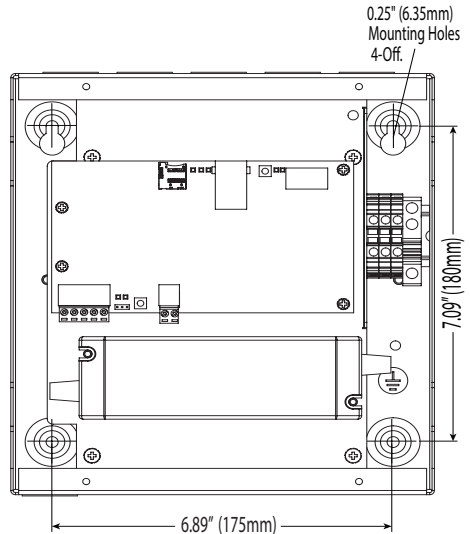
The EG2-NA should be installed in a dry ventilated location, where ambient conditions are maintained within the requirements of the unit.

The unit has ventilation slots on its sides to allow convection cooling and under no circumstances should these be blocked. Allow 50mm (2") above and below the unit if trunking with a depth greater than 50mm (2") is used.

### Mounting Holes

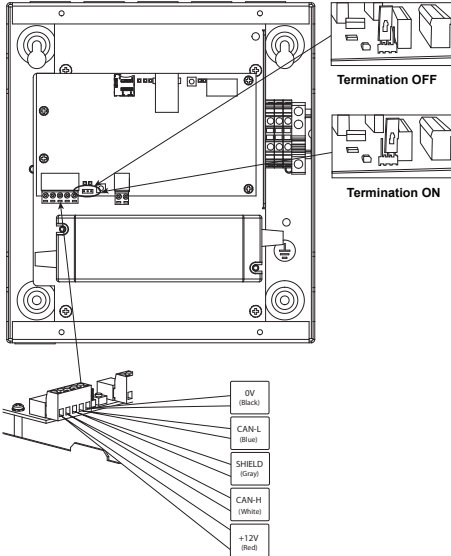
The unit is provided with four 6mm (1/4in) diameter fixing holes for wall mounting.

The mounting holes can be accessed by undoing the four screws on the front cover and removing it.



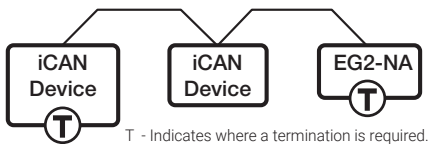
# iCAN Network Connections

A removable 5 position terminal block is provided for the connection of iCAN network cables. If the EG2-NA is located in the middle of the network, incoming and outgoing cables will terminate within the same connector.



Function	iCANnet Cable Colours
0V	Black
CAN L	Blue
Shield	Silver
CAN H	White
+VDC	Red

The EG-2-NA has in-built network termination. If the EG-2-NA is at the end of the network, ensure the CAN TERM jumper is fitted in the Termination ON position.



iCAN devices are 'daisy-chained' on the network. Spurs from the Network are not permitted and will result in communications problems. Devices on an iCAN network can be wired in any order. Termination is required at both ends of the network.

## iCAN Connectors

Cable type: iCANnet Cable  
 Maximum segment distance: 500m (1640 ft)  
 Devices per segment: 100 (without bridge or repeater)

Consult Cooper Lighting Solutions for information on alternative cable types.

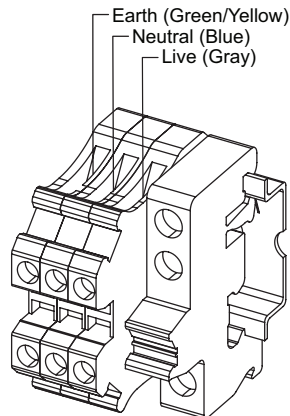
## Supply Wiring

### Connecting the Supply

This unit requires a 120-240 VAC single phase supply (live and neutral) with 0.45 A capability. A terminal block is used to connect the incoming feed to the internal power supply.

### Wire Gauge for Supply Terminals

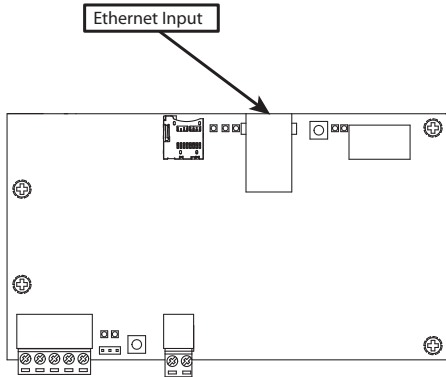
The live, neutral and earth ground power connections are made to the terminal block provided for main power connection. Recommended cable size for live, neutral, and earth is 26 AWG - 10 AWG.



# Setup Instructions

## Ethernet Network

Connect the provided RJ45 (568B) jack to an Ethernet Switch or Wireless Router.



## Configuration

### iCAN Device Number

The EG2-NA is supplied with a iCANnet Device number with Segment number 255 and a node number in the range 1-255. Both Segment and Node number can be changed using iCANsoft.

### Factory Default IP Settings

- IP Address 192.168.0.100
- Mask 255.255.255.0
- Default Gateway 192.168.0.1
- DHCP Off

NOTE: The EG2-NA default settings are to use a fixed IP address of 192.168.0.100. Any device used to communicate with the EG2-NA will need to be located within the 192.168.0.x subnet unless IP Address settings are changed.

## Power Up

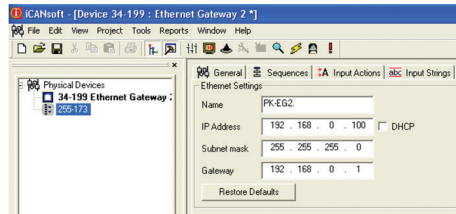
The EG2-NA takes approximately 60 seconds to be ready for use once power is applied. Wait for the Green CAN LED to flash slowly. The Green Power LED will double flash continuously while EG2-NA is on. If Ethernet is connected the Link and Data LEDs will indicate successful connection.

## Setting the IP Address

The factory set IP Address can be changed using iCANsoft software either through a direct PC Node connection through the iCANnet or directly into the Ethernet port of the EG2-NA.

## PC Node Method

Connect a computer running iCANsoft to the iCAN network using a PC Node. Search the network and load the EG2-NA into iCANsoft.



Open the EG2-NA device and select the Ethernet tab. Type in the desired settings. Select OK or Apply to download the changes to the EG2-NA.

To restore settings back to default, select the 'Restore Settings' button. Select OK or Apply to download the changes to the EG2-NA.

## Ethernet Port Method

The EG2-NA is supplied from the factory without DHCP enabled and with a factory default IP address assigned. In order to communicate to the EG2-NA using the Ethernet port, the PC being used must be configured on the same subnet as the default IP address. For details of setting the IP address of your computer consult information online specific to your Operating System.

If the EG2-NA you are configuring is at the factory default settings, the following settings are suggested when assigning a static IP address to your computer:

### Factory Default IP Settings

- IP Address 192.168.0.99
- Subnet Mask 255.255.255.0
- Gateway 192.168.0.1

Once you have configured your PC's IP address, connect the EG2-NA directly to the PC. It may be necessary to use a crossover cable, however, most current computers are able to connect directly to another Ethernet device using a standard Ethernet cable.

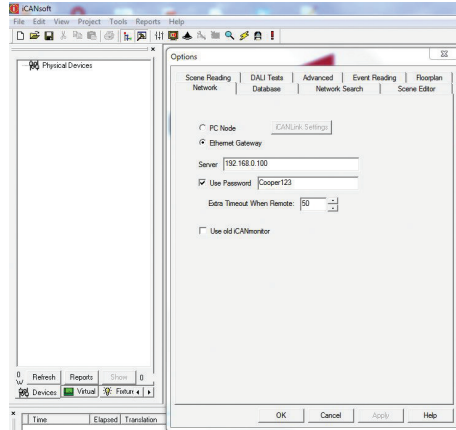
iCANsoft will be used for the configuration process. Open iCANsoft, then select from the Toolbar Tools>Options>Network. Select the Ethernet Gateway option and change the IP Address to 192.168.0.100. Ensure that the 'Use Password' check box is ticked and the default password: **Cooper123** is entered (case sensitive).

Select OK to confirm.

Search the network and load the EG2-NA into iCANsoft. Follow the steps outlined in the PC Node Method section to configure the desired IP Address for the EG2-NA.

Once the IP Address settings have been applied, initialize the new settings in the EG2-NA device by pressing the reset button next to the Ethernet connection or by disconnecting and reapplying power.

Once configuration is complete, if you will be using iCANsoft through the ethernet connection, you will need to update the IP Address in the Toolbar Tools>Options>Network section to match the settings you have assigned to the unit. This screen will also allow you to re-select the option for PC Node to allow for direct PC Node access for this database.



## Reset to Factory Defaults

Factory defaults may be reset by the following procedure:

- Remove power from the board.
- Press the CAN ID button and reapply power. Keep the button pressed until the CAN LED flashes then stays on. At this point the Ethernet settings will have been restored to defaults.
- After setting to factory defaults, the IP address of the device will revert to 192.168.0.100

## Technical Support

Tel: +44 (0)844 324 9100 (available Mon-Fri 9am-5pm GMT)

Email: [cctechsupport@cooperlighting.com](mailto:cctechsupport@cooperlighting.com)

---

All products manufactured by Cooper Lighting Solutions are warranted to be free from defects in material and workmanship and shall conform to and perform in accordance with Seller's written specifications. For detailed warranty information, contact Cooper Lighting Solutions.

This warranty will be limited to the repair or replacement, at Seller's discretion, of any such goods found to be defective, upon their authorized return to Seller. This limited warranty does not apply if the goods have been damaged by accident, abuse, misuse, modification or misapplication, by damage during shipment or by improper service.

There are no warranties, which extend beyond the hereinabove-limited warranty, INCLUDING, BUT NOT LIMITED TO, THE IMPLIED WARRANTY OF MERCHANTABILITY AND THE IMPLIED WARRANTY OF FITNESS.

No employee, agent, dealer, or other person is authorised to give any warranties on behalf of the Seller or to assume for the Seller any other liability in connection with any of its goods except in writing and signed by the Seller. The Seller makes no representation that the goods comply with any present or future federal, state or local regulation or ordinance. Compliance is the Buyer's responsibility.

The use of the Seller's goods should be in accordance with the provision of the National Electrical Code, UL and/or other industry or military standards that are pertinent to the particular end use. Installation or use not in accordance with these codes and standards could be hazardous.

---



FM 864349



---

## Cooper Lighting Solutions

### UK

Usk House, Lakeside, Llantarnam Park,  
Cwmbran, NP44 3HD, UK  
t: +44 (0)1923 495495  
e: [info@cooperlighting.co.uk](mailto:info@cooperlighting.co.uk)  
[www.cooperlighting.co.uk](http://www.cooperlighting.co.uk)

### US

1121 Highway 74 South  
Peachtree City, GA 30269  
[www.cooperlighting.com](http://www.cooperlighting.com)  
P: 1-800-553-3879

### Canada

5925 McLaughlin Road  
Mississauga, Ontario L5R 1B8  
P: 905-501-3000  
F: 905-501-3172