

## Introduction

PlanView provides instantaneous access to the operation and health of an iLight lighting control system.

Building managers, operators and end users can control one or more sites, monitoring multiple buildings, floors and individual areas as well as the hardware components of the system at varying levels of granularity.

Users are empowered to make changes simply and efficiently, proactively managing the built environment for the benefit of the occupants.

## Items included



USB drive containing:

- **Plan View**
- **Plan View Editor** for the conversion of legacy Device Editor files.
- **Connection Monitor** for system connection status

## Minimum PC Specification

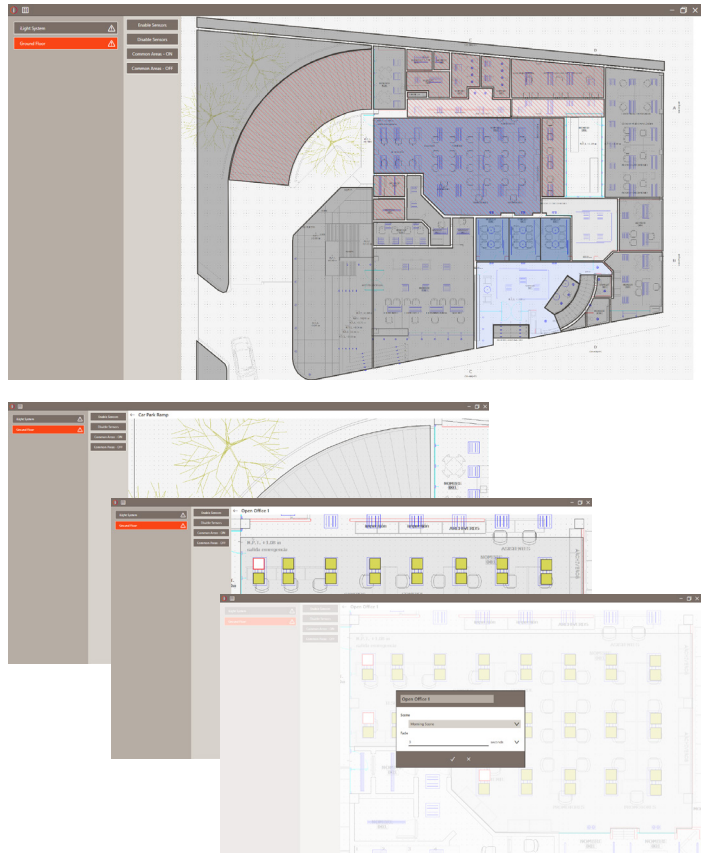
i5 quad core PC, Industrial Spec preferred for 24/7 operation, with 16GB ram, 500GB HDD, Windows 10 Pro. PC must include 100/1000 Ethernet Port.

Recommended screen resolution:  
1920 x 1080 pixels

Recommended screensaver image size:  
1600 x 1007 pixels

Recommended background image size:  
1920 x 1007 pixels

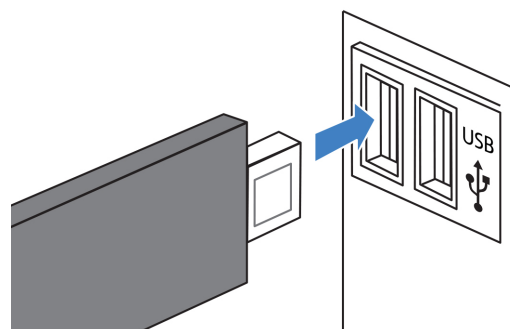
Prior to running PlanView or any of the software applications, ensure you access the setup and programming guides on the iLight support site: [www.ilight.info](http://www.ilight.info)



## Installation

Insert PlanView Software USB into PC and access the folder via windows explorer.

To install the applications, click on each of the .msi files for Plan View, Plan View Editor and Connection Monitor



## iLight

Usk House, Lakeside, Llantarnam Park,  
Cwmbran, NP44 3HD, UK  
[enquiries@ilight.co.uk](mailto:enquiries@ilight.co.uk)  
[www.ilight.co.uk](http://www.ilight.co.uk)

Doc: PlanView 9850-001122-00